



# DIRECTEMP™ USB THERMOMETER SERIAL INSTALLATION GUIDE



# TABLE OF CONTENTS

Windows XP Installation Instructions ..... Page 3

Windows Vista, 7, and 8 Installation Instructions ..... Page 7

Windows 2000 Installation Instructions ..... Page 11

## Before Beginning Installation

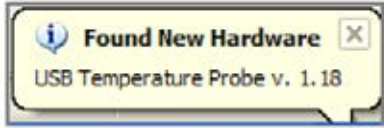
All software and drivers referenced in this guide can be found on QTI's website. Before beginning DirecTemp installation, please visit [www.thermistor.com/software-and-drivers](http://www.thermistor.com/software-and-drivers) to download the software and drivers file, then unzip the folder that was downloaded.



# WINDOWS XP SETUP INSTRUCTIONS

## Driver Installation

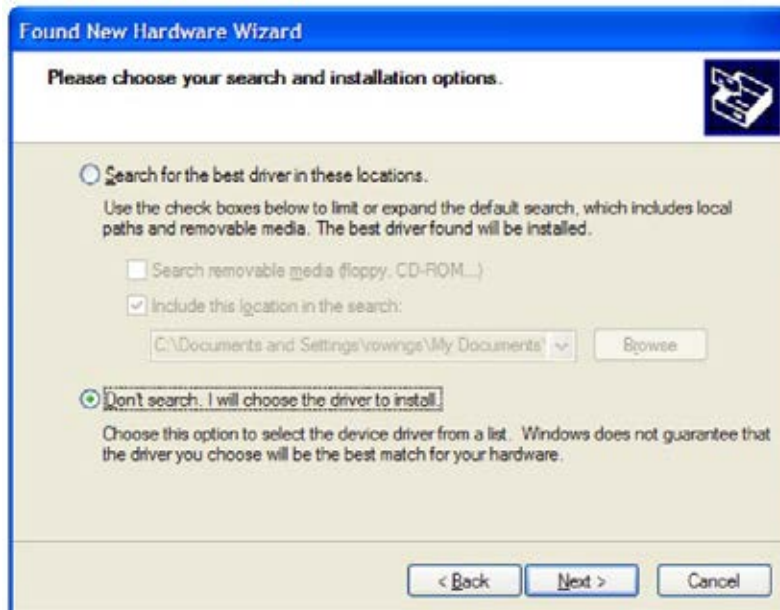
1. Connect the probe to the PC USB port.
2. Install the Windows driver by following the prompts below. You should see the following notification from Windows XP:



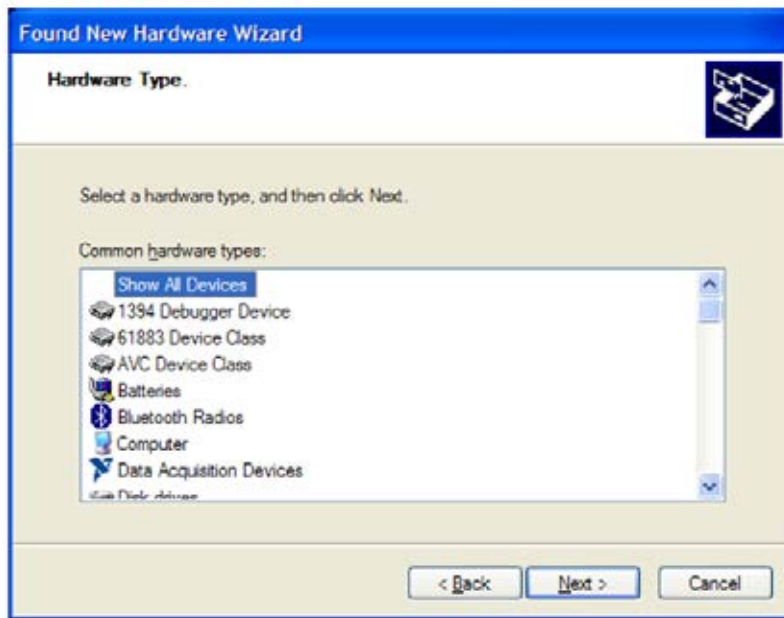
- a. Select **INSTALL FROM A LIST** option as seen below and click **NEXT**.



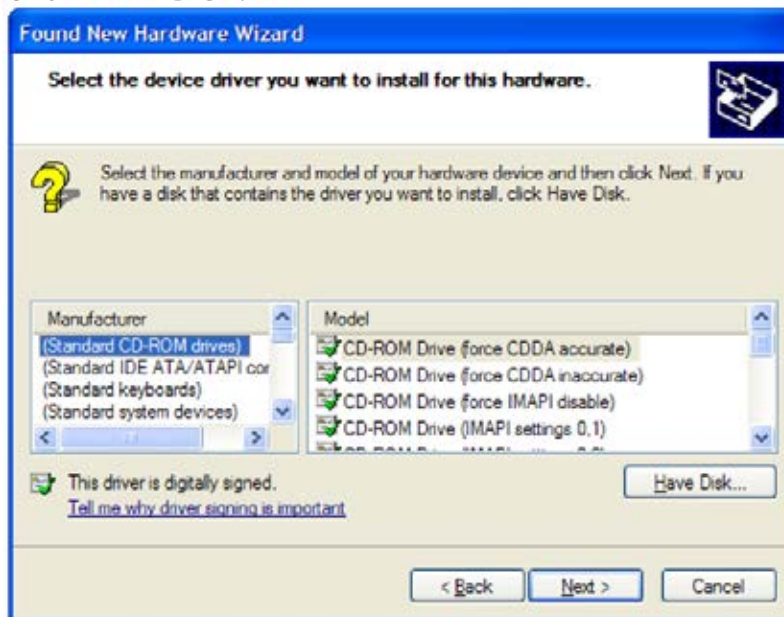
- b. Select **DON'T SEARCH** and click **NEXT**.



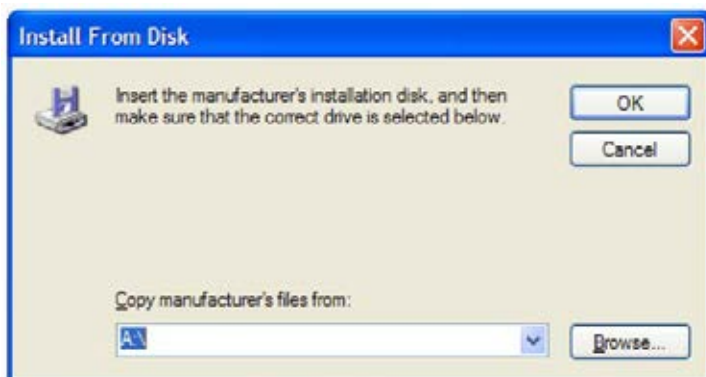
c. Select **SHOW ALL DEVICES** and click **NEXT**.



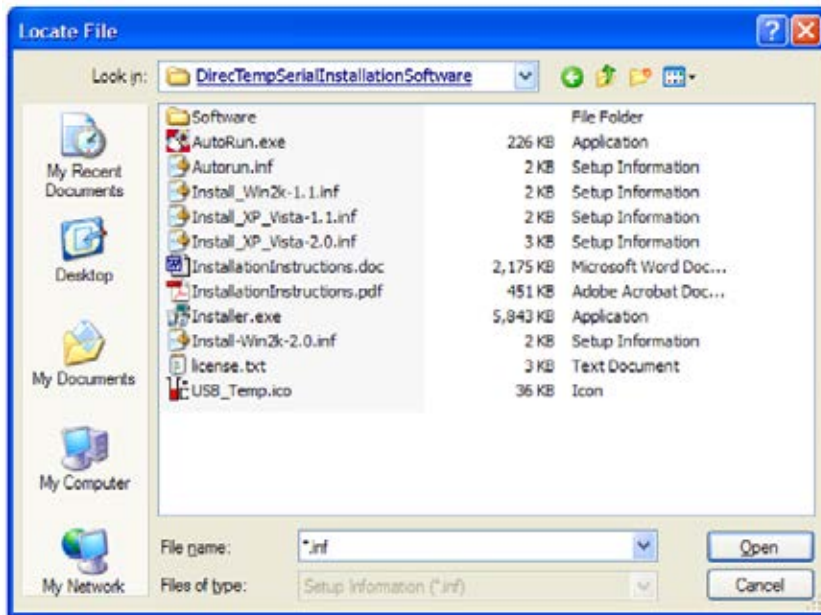
d. Click on **HAVE DISK**.



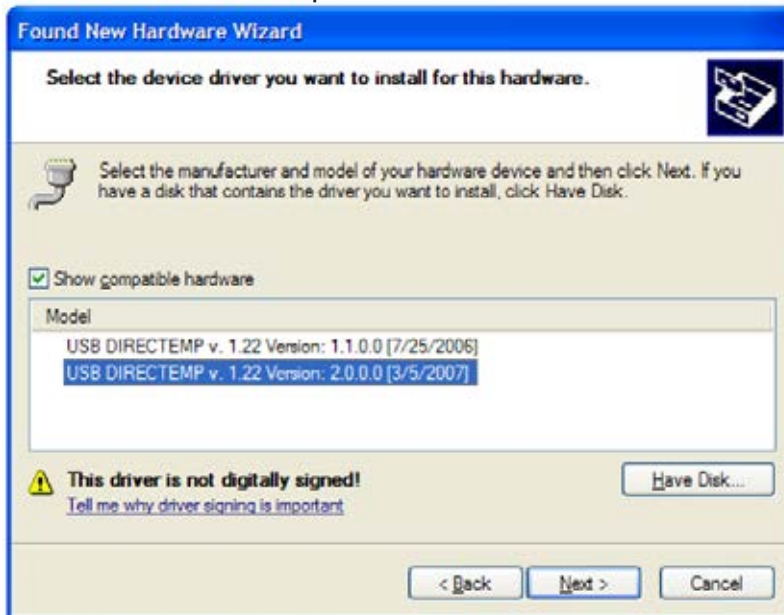
e. Select **BROWSE**.



f. Navigate to the unzipped folder downloaded from QTI's website and select **OPEN**. A particular file need not be selected; selecting the folder is more important.



g. Select either of the listed probe drivers.



g. When this prompt pops up, click **CONTINUE ANYWAY**.



h. Select **FINISH** when final box says so. The DirecTemp drivers are now installed.



## Software Setup

3. Open the unzipped software file downloaded from QTI's website and open the **AUTORUN.EXE** file.
4. Select **INSTALL WINDOWS MEASUREMENT SOFTWARE (menu item 2)** from the menu to install the measurement software.
5. If the measurement software does not run, then your system requires the updated Java Runtime Environment (JRE). Please select **INSTALL JAVA RUNTIME ENVIRONMENT (menu item 3)** from the AutoRun.exe menu to start installation of the JRE.

# WINDOWS VISTA, 7 AND 8 SETUP INSTRUCTIONS

## Driver Installation

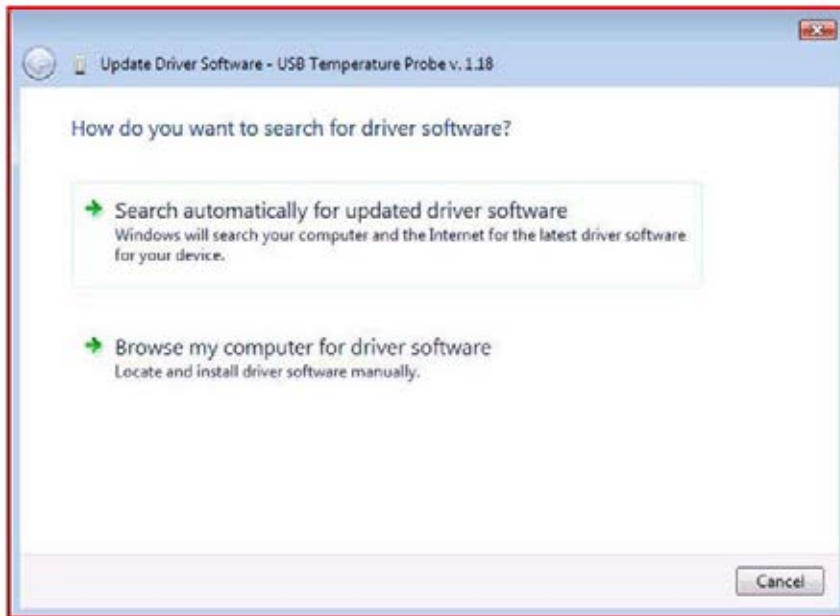
1. Connect the probe to the PC USB port.
2. Install the Windows driver by following the prompts below. You should see the notification window below.
  - a. Select **LOCATE AND INSTALL DRIVER SOFTWARE**. Any time you see the prompt for permission to continue, please select **CONTINUE**, **CONTINUE ANYWAY** or **OK**.



- b. Select **NEXT**.



c. Select **BROWSE MY COMPUTER FOR DRIVER SOFTWARE**.



d. Click on the **BROWSE** button and navigate to the location of the unzipped file downloaded from QTI's website.

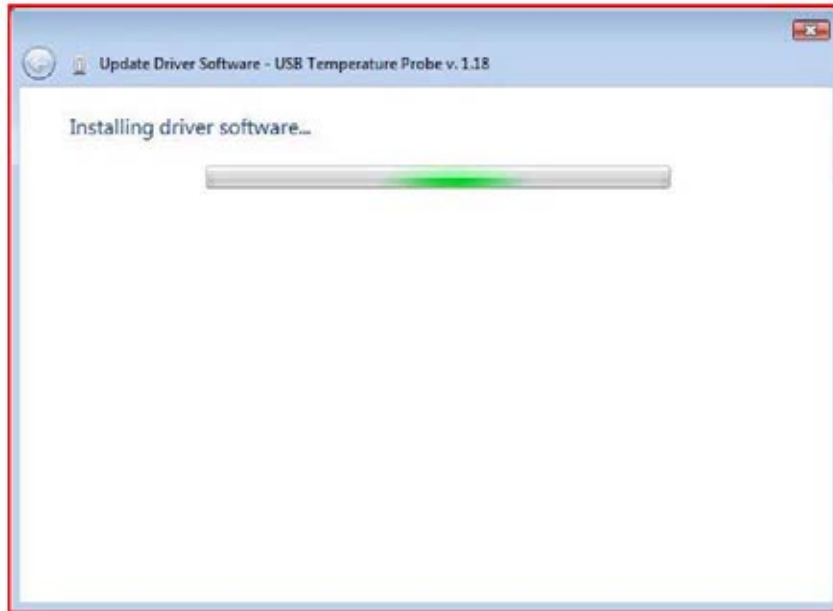




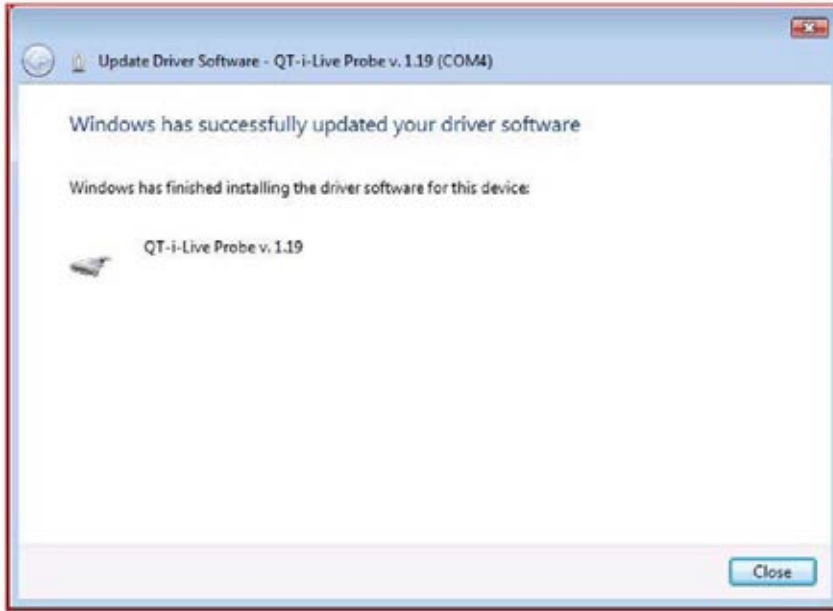
e. If Windows Security requires verification, select **INSTALL DRIVER ANYWAY**.



f. The driver should proceed to install.



g. Click **CLOSE** when the driver installation is complete.



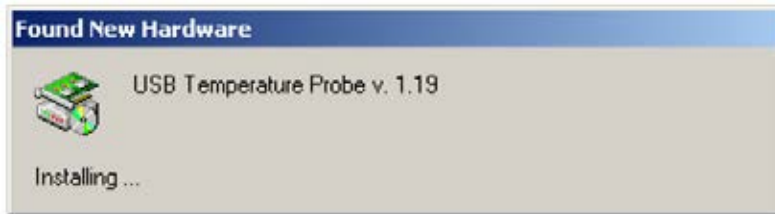
## Software Setup

3. Open the unzipped software file downloaded from QTI's website and open the **AUTORUN.EXE** file.
4. Press **INSTALL WINDOWS MEASUREMENT SOFTWARE (menu item 2)** on the resulting menu.
5. Press the **COPY JAVA LIBRARY (menu item 4)** button on the installation menu.
6. If Java Runtime Environment 1.6.0\_05 is not installed on the PC, then select **INSTALL JAVA RUNTIME ENVIRONMENT (menu item 3)** from the AutoRun.exe menu.
7. Run the measurement program by clicking on the Start menu. Select **TEMPERATURE PROBE** and click on the .jar file.

# WINDOWS 2000 SETUP INSTRUCTIONS

## Driver Installation

1. Connect the probe to the PC USB port.
2. Install the Windows driver by following the prompts below. Windows 2000 will indicate new hardware and after searching, will prompt for more information to install the driver.



- a. Press **NEXT**.



b. Select the **DISPLAY A LIST** option and press **NEXT**.



c. Select any category. The category type does not matter. Click **NEXT**.



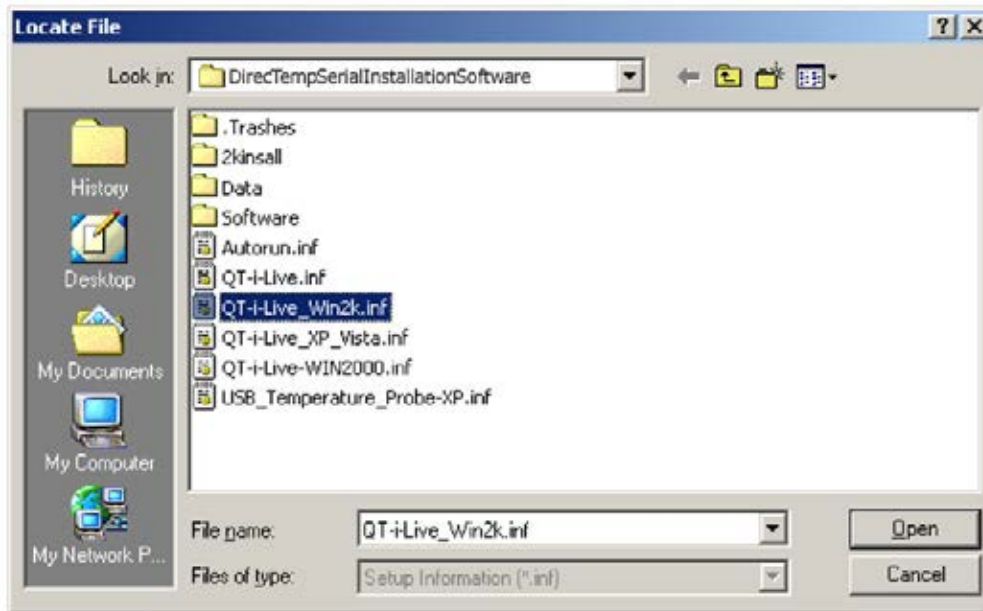
d. Click on the **HAVE A DISK** button.



e. Click **BROWSE**.



f. Select the unzipped software folder downloaded from QTI's website. Select the folder, not the file. Select **OPEN**. (If you select the wrong INF file, you may see an error indicating that your driver is not found.)



g. Select **OK**.



h. The driver is now available. Select the **PROBE V. X.XX LINE** so it is highlighted. You may have several that show up. Pick any one of them, as they will install the same driver file. The difference in numbering is the internal probe firmware, not the driver. Select **NEXT**.



i. Installation is almost complete. Press **NEXT**.



j. Driver installation is complete. Press **FINISH**.



## Software Setup

3. Open the unzipped software file downloaded from QTI's website and open the **AUTORUN.EXE** file.
4. Press **INSTALL WINDOWS MEASUREMENT SOFTWARE (menu item 2)** on the AutoRun.exe menu.
5. If Java Runtime Environment 1.6.0\_05 is not installed on the PC, then select **INSTALL JAVA RUNTIME ENVIRONMENT (menu item 3)** from the AutoRun.exe menu.
6. After installation, press **COPY JAVA LIBRARY TO WINDOWS 2000 (menu item 4)**.



# THANK YOU FOR CHOOSING DIRECTEMP!

Visit [www.thermistor.com](http://www.thermistor.com) for

- answers to frequently asked questions
- software code examples
- additional DirecTemp probe styles
- recalibration information



**DIRECTEMP<sup>®</sup>**

**Qti**  
Sensing Solutions

[WWW.THERMISTOR.COM](http://WWW.THERMISTOR.COM)